

GREEN  **CLOVER**



OUR **SERVICES** INCLUDE

- ✓ **REPURPOSING**
- ✓ **PROP & SCENERY HIRE**
- ✓ **PROP & SET CONSTRUCTION**
- ✓ **CONSUMABLES**
- ✓ **STORAGE & ASSET MANAGEMENT**
- ✓ **TRANSPORT**

WE ARE THE **NEW** ECO-FRIENDLY HOME OF

- ✓ **SQUEEKY WHEELS**
- ✓ **SET TRANSPORT**
- ✓ **KEPTSET LOGISTICS**
- ✓ **LONDON PROPMaking**
- ✓ **SCENERY SALVAGE**
- ✓ **QUARTERMASTER STORES**



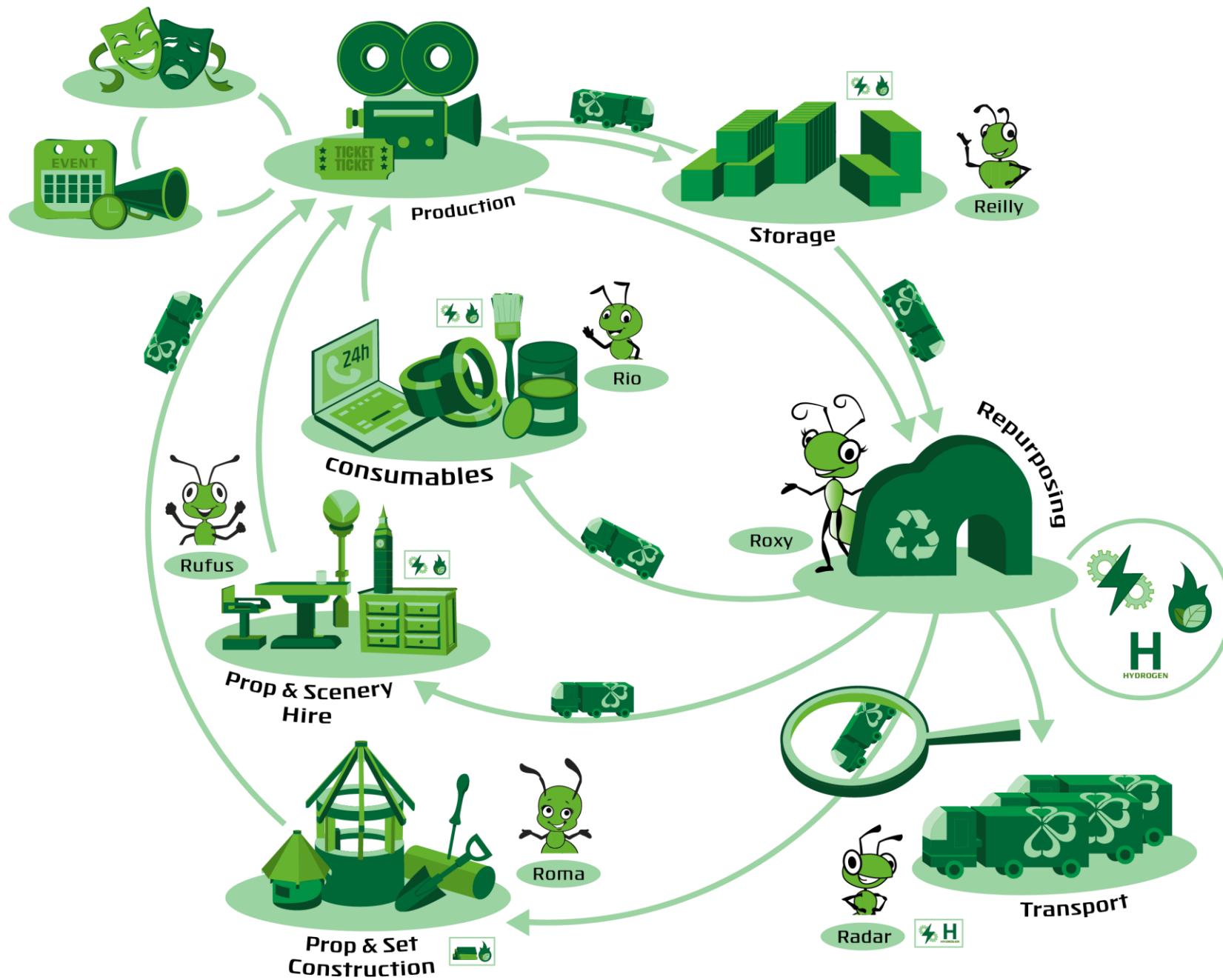
ABOUT US

Green Clover is a sustainable and **eco friendly alternative** to conventional storage, transport & prop management services in the UK.

You may be able to guess from the name, but we're **big fans of the Earth**. So the aim is to do our part in preserving it.

HOW DO WE DO THIS?

Glad you asked...





Our goal is to provide a premium service whilst keeping wastage to an absolute minimum. Quite literally fuelling our business model with reusable energy.



Created by us

30 years of working within the Arts, Entertainment & Events industry means that we have continuously developed a method for success. From small scale problem solving to highly complex strategies, we are able to offer market leading solutions that are bespoke to you and your business.



THE ANT IN THE ROOM

Our pledge to sustainability does not affect your bottom line. In fact, our **uniquely designed ecosystem** works to lower cost across the board, leveraging our patented **'Repurpose Cycle'** to offer the most competitive of rates.

This means that our 5 star, premium service is also having a positive impact on the planet.





SOME OF OUR CLIENTS





REPURPOSING SERVICE - The heartbeat of Green Clover

Hollywood blockbuster creates around 4,000 metric tons of CO2. It's a shift in mindset that is required to help the industry become more resourceful. There is a disconnect between *purpose built sets & sustainability*. Green Clover is designed to be the lynchpin - bridging this gap and actively exhibiting the alternative to short term thinking.

SO, WHAT CAN BE REPURPOSED? As it turns out, most things.

WHAT ARE THE REPURPOSING OPTIONS? We've refined the repurposing process to create three eco friendly outcomes:

- **Prop Hire & Scenery Hire** - anything that still has a use is added to our prop & scenery hire section of the business.
- **Consumables** - through repurposing we offer a vast range of new & salvaged consumables. In addition to this, we accrue surplus items from productions and redistribute them.
- **Repurpose Cycle** - items that cannot be reused in their current form are repurposed into raw materials.



REPURPOSING SERVICE - The heartbeat of Green Clover

ENVIRONMENTAL AUDIT

Green Clover is able to provide bespoke client reports that clearly outline how materials have been repurposed. This is key to companies that have undertaken sustainability pledges. There is also evidence to support that stronger measures will be implemented within the entertainment industry to ensure companies 'do more' when it comes to the environment.



PROP & SCENERY HIRE SERVICE - We've got what you need

Whether it be a full scale set design or replica coins, we've salvaged items from TV shows, Festivals, Exhibitions. Our client list ranges from large scale production to academic institutions & everything that sits in the middle.

UNIQUE MODEL

All of our hire range hails from previous productions. This means that we can offer items that would have otherwise been discarded. Good for the environment, great for your budget.

ONLINE CATALOGUE

We're fine tuning our online database in order to provide you with the latest items that we have in our repertoire.

OFFSETTING

Means we are able to create a value exchange when collecting redundant items from a Production. Like a Loyalty Scheme if you will. We can remove surplus items whilst offering reduced rates on our services in return.



PROP & SET CONSTRUCTION SERVICE - One Stop Set & Prop Shop

We aim to include as much repurposed material as possible. In fact, our construction work is only able to commence after rigorous vetting of the materials required.

We are able to construct full scale sets at our onsite workshops - all heated with our own bio-fuel.

As the construction and transportation hubs sit onsite, it means we can get your items to you without any logistical nightmares or unforeseen delays.

WORKSHOP ENERGY

We're a vibrant bunch, but we don't mean that energy. Our workshops are soon to be entirely powered by converted energy from solar panels. No power from the grid, no damaging fossil fuels.



CONSUMABLES SERVICE - Products based on experience

Our Consumables shop is an outlet we've been fine tuning over the years. You may even know us formerly as Quartermaster Stores. It's the vast amount of industry experience that allows us to supply the items we know you'll need: **quickly & efficiently delivered.**

OUR CONSUMABLES COLLECTION IS COMPRISED OF THREE SECTIONS:

- **New Consumables:** Supplied directly to the art and entertainment industry.
- **Salvaged Consumables:** Products created via our repurposing division that are available at preferential rates.
- **Offset:** We collect redundant materials from previous productions.

SURPLUS TO REQUIREMENTS? NOT ON OUR WATCH!

As with every touch point of Green Clover, implementing an eco element is essential. So in addition to ordering in specific stock from wholesalers, we also work with productions to absolve any surplus they have when it's time to wrap.



OUR CONSUMABLES SERVICE

TRANSPORT INTEGRATION

Our logistics team ensure that if consumables are purchased with a prop rental / prop sale, they are delivered via the same mode of transport to the required destination.

SAME DAY / NEXT DAY DELIVERY (LONDON LOCATIONS)

We know the importance of time management within the industry. Therefore we are dedicated to getting your consumable purchases to you as quickly as possible. As our entire range is on site, delivery is handled directly by us!



OUR TRANSPORT SERVICE - A to B with efficiency

Our wide ranging fleet of purpose built vehicles can meet all of your transportation needs. The specifications are designed with the Arts, Entertainment & Events sector in mind. This can be ranging from finite measurements for loading bays to unique cargo capabilities within HGVs. It's an appreciation of detail that we have developed over three decades - subtle nuances can make the largest difference.

Custom made internal fixtures within each vehicle mean that our efficiency levels are unparalleled - without compromising any of the production equipment within. **Our modular approach to transportation means less trucks & less emissions.**

THE PLEDGE TO SUSTAINABILITY DOESN'T STOP THERE THOUGH...

➤ New Technology

We are constantly reviewing our eco approach and currently in the process of onboarding hybrid vehicles to our ever expanding range. In addition to this, all electric vehicles will be charged using energy generated from on site solar panels.



OUR TRANSPORT SERVICE

➤ There's More...

Our roadmap includes a revolutionary process to convert energy wastage into hydrogen fuel that will offer a dual approach to fuelling our vehicles.

➤ Regulation Standards

All of our fleet are EURO 6 compliant.



OUR STORAGE SERVICE - Safe storage powered by the GC ecosystem

From our years of experience, we believe there's no 'one size fits all' approach to storage. That's why we've developed three easy to understand options:

- Exclusive
- Bonded
- Container

We can work collaboratively with any production to find the most suitable and cost efficient solution to your storage needs.



OUR STORAGE SERVICE

CLIMATE CONTROLLED FACILITIES

Our Exclusive & Bonded storage options are heated with bio-mass created by redundant scenery. We're currently reviewing options to add the containers to this list.

WRAP & PACK

From our experience in set strikes and storage handling we can now offer a Wrap & Pack service. Delivered directly from production, we ensure the correct methods are used to care for you property.

INTEGRATED ASSET MANAGEMENT

We're currently in the beta stage of developing our Asset Management app. This works in real time and means that a full audit trail of your items can be accessible at the touch of the button.